



Autodesk Fusion360 – User Assignment Checking

Please check that whether you are assigned as a user of Fusion360 by the following steps:

A. Pre-requisite: Autodesk Account

If you do not have an Autodesk Account, then please create one at:

1. Go to web site <https://accounts.autodesk.com/>
2. Select “Create Account”



您的帳戶可用來處理任何 Autodesk 事物

建立帳戶

登入

3. Fill in all the required information, with **your HKUST email only.**

建立帳戶



名字

Patrick

姓氏

Lam

電子郵件

empatlam@ust.hk



此帳戶已經存在
改為登入

確認電子郵件

empatlam@ust.hk



密碼

|

- 至少需包含 1 個字母
- 至少需包含 1 個數字
- 至少需 8 個字元
- 至少要有 3 個唯一的字元

我同意 Autodesk 使用條款和隱私權聲明


建立帳戶



4. After creating your Autodesk Account, an email from Autodesk will be sent to your registered email for verification.
 - Please click the web link inside the Autodesk email to verify your Autodesk Account.

B. Login web-based Fusion 360

1. Go to web site <https://fusion.online.autodesk.com>
2. Enter your **HKUST email (i.e. your Autodesk Account)**, then click “Next”.

登入 

電子郵件

[初次使用 Autodesk ? 建立帳戶](#)

3. Enter your Autodesk Account password, then click “Login”.

< 歡迎
empatlam@ust.hk

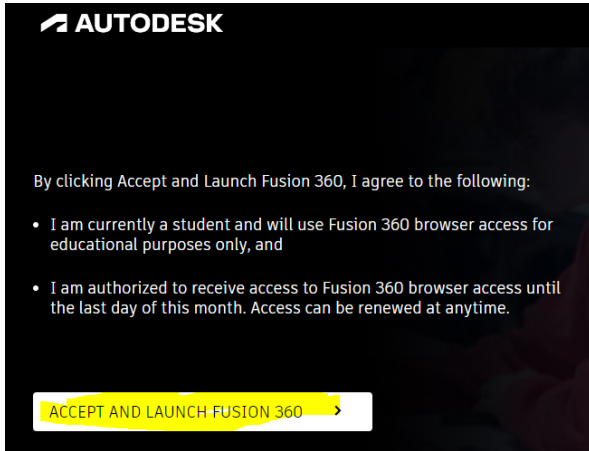


密碼 [忘記密碼?](#)

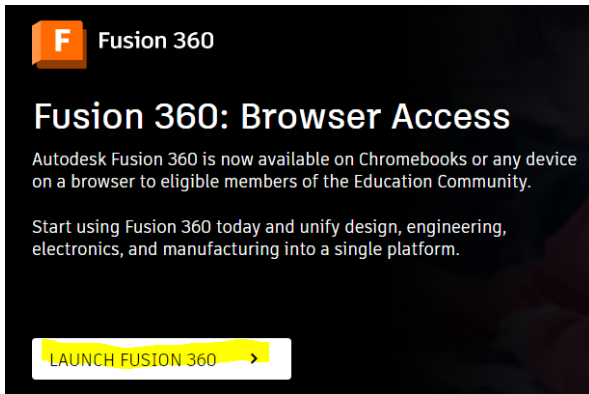
保持登入



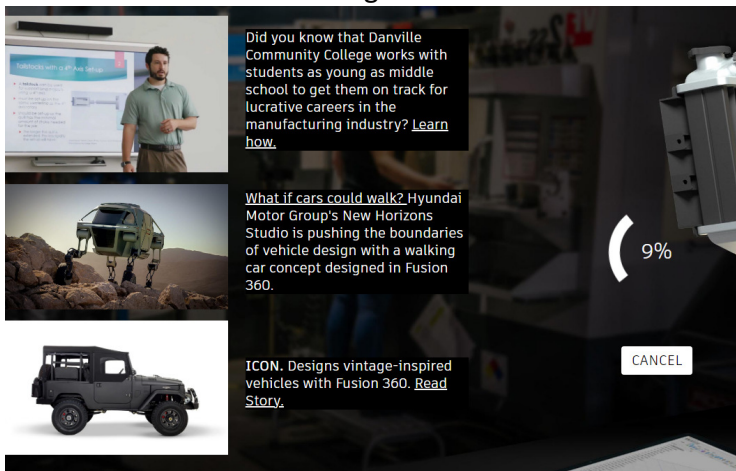
4. Click "ACCEPT AND LAUNCH FUSION 360".



5. Click "LAUNCH FUSION 360".



6. It will take a while for loading Fusion 360.

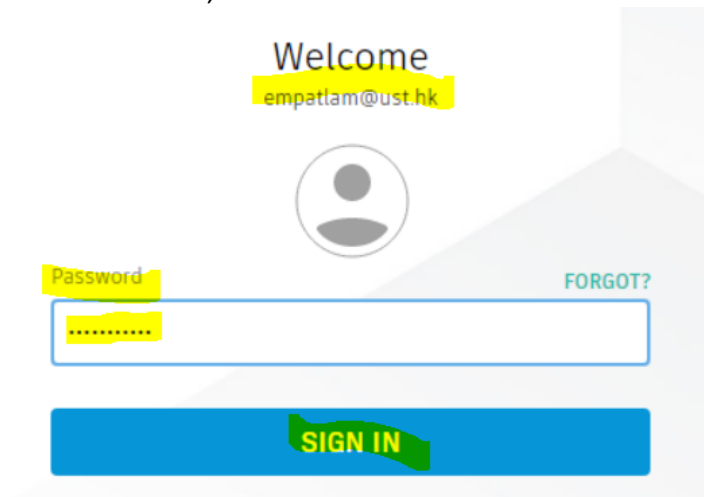




7. After loading of Fusion 360, you will see the signage screen of Fusion 360.



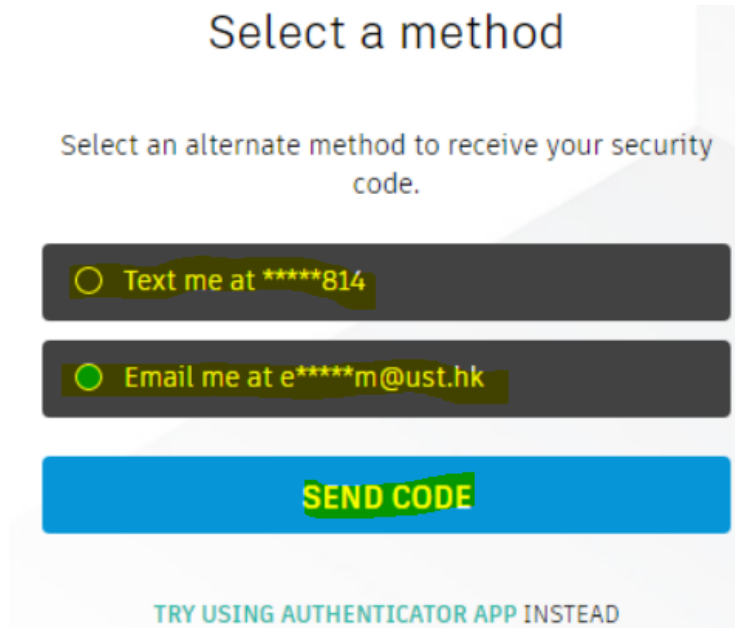
8. You will then be asked to login your Autodesk Account again. Please enter the password of your Autodesk Account, and then click “SIGN IN”.



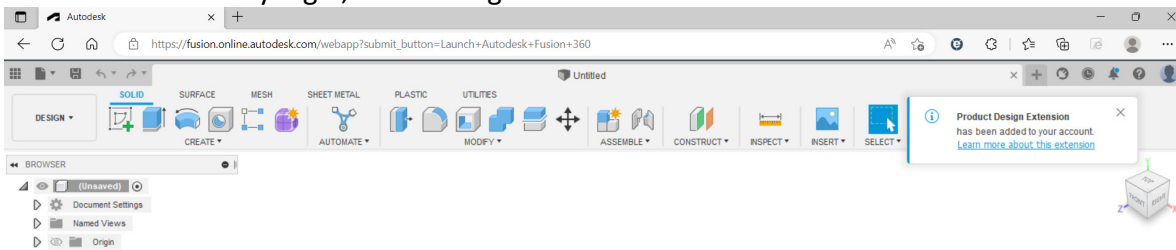
9. You can then use your Authenticator App (i.e. DUO) to generate security code, or you can click “USE ANOTHER METHOD”.
- If you have registered Autodesk Account with DUO, then please generate the requested code from DUO.
 - **Please note that this requested code is NOT the code being generated from DUO by your HKUST 2FA.**



- If you select to “USE ANOTHER METHOD”, then please select either your registered mobile or email to receive the code.



10. After successfully login, the starting screen of Fusion 360 is shown.



11. To sign out Fusion 360:

- Click the head icon at top right-hand corner.
- Select “Sign Out”.

